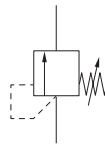


# Direct Operated Relief Valve



JIS graphic symbols for hydraulic system



## Features

- As the override pressure is small, this valve has almost equivalent performance to a pilot operated type.
- The vibration proof structure prevents chattering even in the high pressure range.
- Broad range of adjusting is possible and pressure adjusting in low pressure area is easy to do.

## Nomenclature

**SR** - **※** **03** - **1** - **※** **※**

1   
 2 3   
 4   
 5

- 1 Model No. (Applicable fluids: petroleum-based hydraulic oil)**  
SR: S series direct operated relief valve
- 2 Connections**  
G: Gasket mount type  
T: Screw connection type
- 3 Nominal diameter**  
03: 3/8

- 4 Pressure adjustment range**  
1: 0.3 to 7 MPa {3 to 70 kgf/cm<sup>2</sup>}
- 5 Design No.**  
**(The design No. is subject to change)**  
12: Screw connection type (T)  
13: Gasket mount type (G)

## Specifications

Model code	Nominal diameter	Pressure adjustment range MPa {kgf/cm <sup>2</sup> }	Maximum flow rate L/min	Mass kg
SR-G03-1-13	3/8	0.3 to 7 {3 to 70}	30	2.5
SR-T03-1-12				2

## Sub-plate model code

- The sub-plate is not provided with the valve. Order it separately as required by specifying the model code given in the table below.

Model code	Nominal diameter	Connection port diameter	Mass kg
SR-03M	3/8	Rc3/8	1.5

Refer to Page S-6 for the dimensions of the sub-plate.

## Accessories (gasket mount type)

Model code	Pressure change MPa {kgf/cm <sup>2</sup> } per handle revolution
SR-※03-1	0.9 {9}/revolution

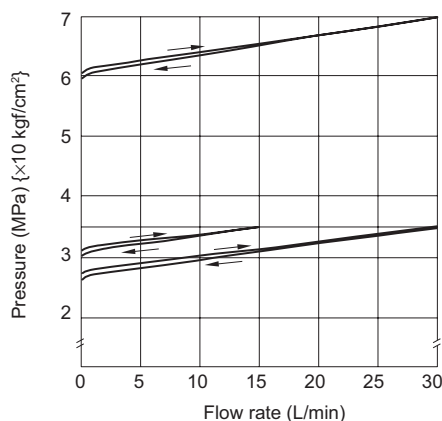
Hexagon socket head cap bolt	Quantity	Tightening torque N·m {kgf·cm}
M6 × 65	4	10 to 12.5 {100 to 125}

## Handling

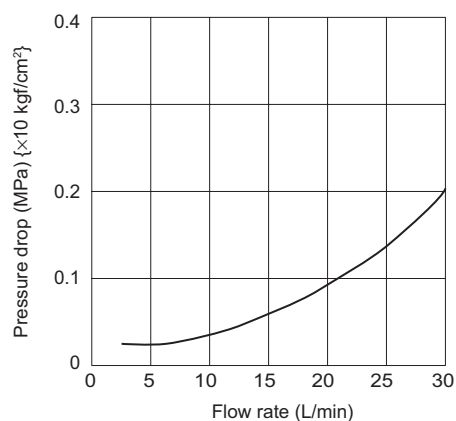
- Directly connect the tank piping of the valve to the tank without merging it with other tank piping.
- To achieve stable pressure adjustment, completely remove air by loosening the air bleeding screw and fill the inside of the valve with fluid.  
Remove air with the pressure adjusting handle fully open.
- When using the valve as a safety valve, set the pressure 1 to 1.5 MPa {10 to 15 kgf/cm<sup>2</sup>} higher than the pressure set for the hydraulic circuit.
- Use the valve with a flow rate of 1 L/min minimum since the pressure setting may be unstable if the flow rate is too low.

## Performance curves (viscosity: 32 mm<sup>2</sup>/s {cSt})

Flow rate - Pressure characteristics



Pressure drop characteristics (with the handle fully open)



## Contact Details

Before using the product, please check the guide pages at the front of this catalog.

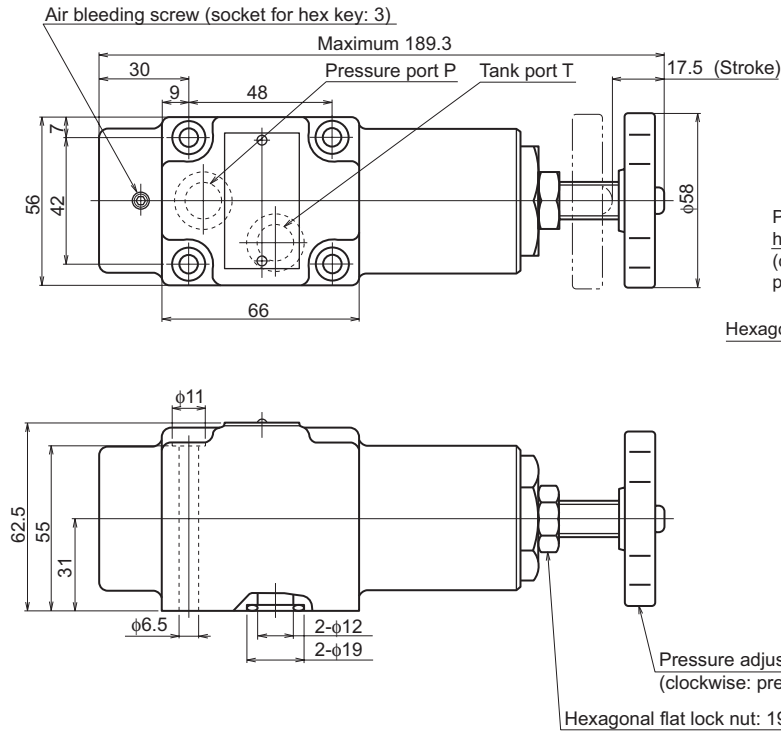
Internet

<https://www.daikinpmc.com/en/>

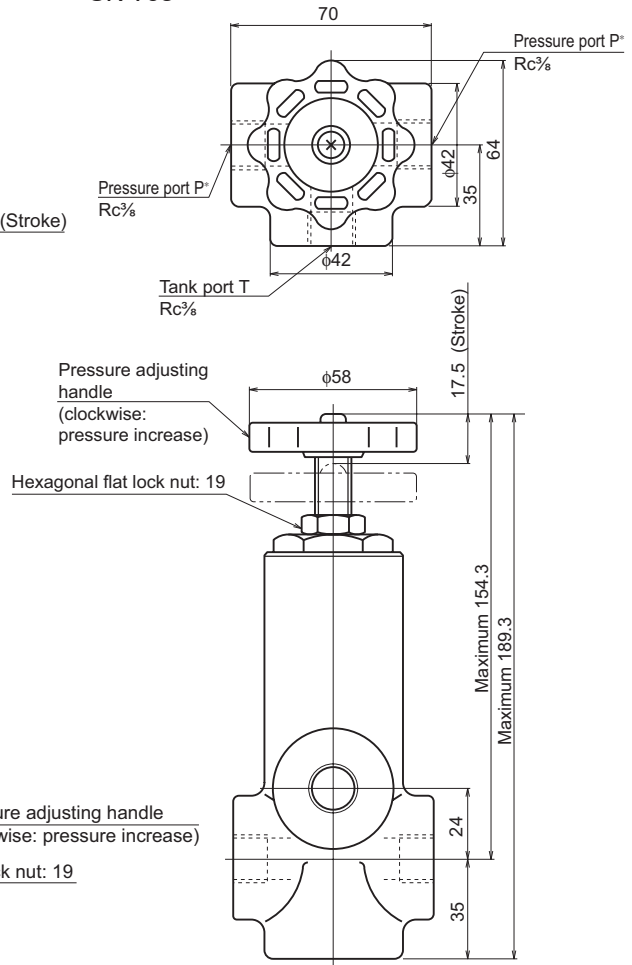
For latest information, PDF catalogs and operation manuals

## External dimension diagram

SR-G03



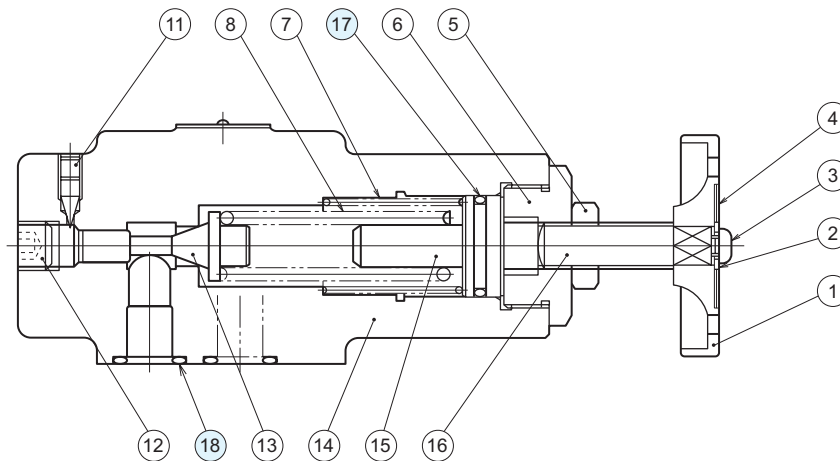
SR-T03



\* The P ports at both sides connect with each other internally.  
One can be used as a port for mounting a pressure gauge, for example.

## Sectional structural diagram

SR-G03



### Sealing part table

Part No.	Name	Quantity	Part specifications	
			SR-G03	SR-T03
17	O-ring	1	JIS B 2401 1AP22	JIS B 2401 1AP22
18	O-ring	2	JIS B 2401 1AP15	-