

## Contact Details

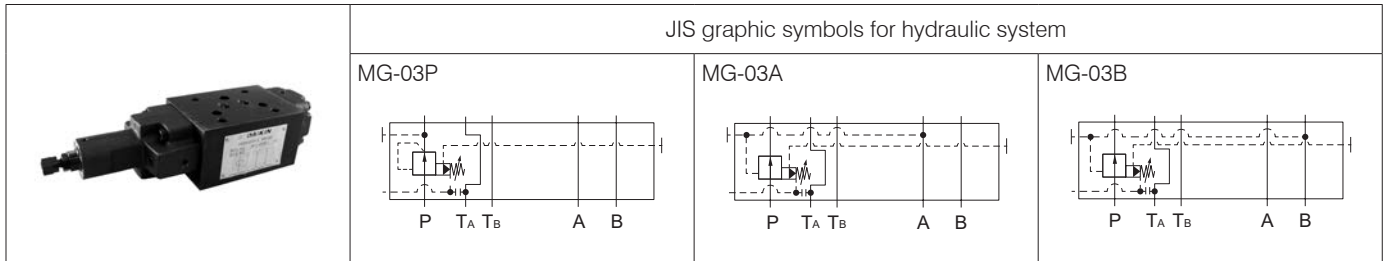
Before using the product, please check the guide pages at the front of this catalog.

Internet

<https://www.daikinpmc.com/en/>

For latest information, PDF catalogs and operation manuals

# 03 Series Stacking Type Reducing Valves



## Nomenclature

※ - **MG** - **03** ※ - ※※ - **40** - ※  
1      2      3   4      5      6      7

### 1 Applicable fluid code

No designation: Petroleum-based hydraulic fluid,  
water-glycol hydraulic fluid  
F: Phosphate ester hydraulic fluid

### 2 Model No.

MG: Modular stacking type reducing valve

### 3 Nominal diameter

03:  $\frac{3}{8}$

### 4 Control port

P: Port P  
A: Port A  
B: Port B

### 5 Pressure adjustment range

03: 0.3 to 7 MPa { 3 to 70 kgf/cm<sup>2</sup> }  
1: 0.7 to 7 MPa { 7 to 70 kgf/cm<sup>2</sup> }  
3: 3.5 to 25 MPa { 35 to 250 kgf/cm<sup>2</sup> }

### 6 Design No.

(The design No. is subject to change)

### 7 Option code

No designation: Pressure adjusting screw type, external drain type  
T: Pressure adjusting handle type  
X: Internal drain type

## Specifications

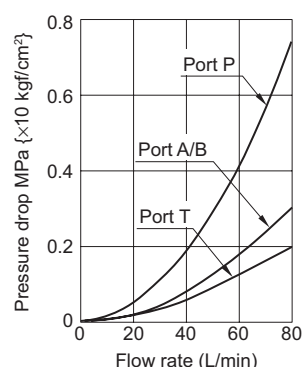
Model code	Maximum operating pressure MPa {kgf/cm <sup>2</sup> }	Maximum flow rate L/min	Pressure adjustment range MPa {kgf/cm <sup>2</sup> }	Mass kg	Pressure change MPa {kgf/cm <sup>2</sup> } per screw revolution
MG-03※-03-40	16 {160}	80	0.3 to 7 { 3 to 70 }	4	2.5 {25}/revolution
MG-03※- 1-40	25 {250}		0.7 to 7 { 7 to 70 }		2.5 {25}/revolution
MG-03※- 3-40			3.5 to 25 {35 to 250}		7.9 {79}/revolution

## Handling

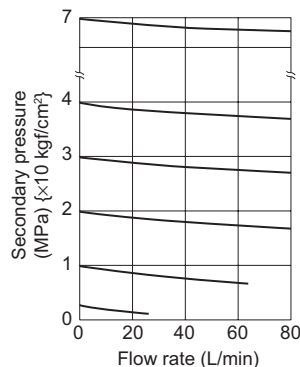
- Directly connect the drain piping to the tank without merging it with other tank piping.
- To ensure good pressure reducing performance, set the primary side main circuit pressure and the secondary pressure reducing circuit pressure such that there is a minimum difference of 1 MPa {10 kgf/cm<sup>2</sup>}.
- When using the valve in combination with a direct operated relief valve for remote control, connect the remote control valve to the vent port. Since excessive internal volume of the pilot piping may lead to vibration, use steel pipes with an inner diameter of 4 mm maximum and with thick walls for this piping.

## Performance curves (viscosity: 32 mm<sup>2</sup>/s {cSt})

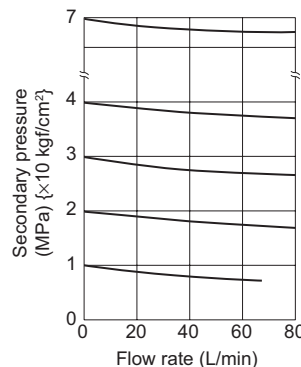
Pressure drop characteristics  
MG-03※-※-40



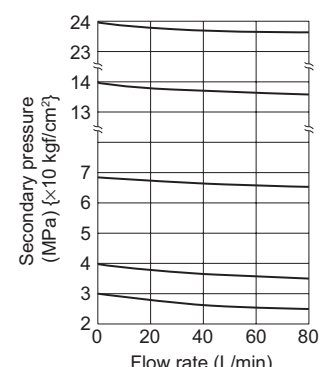
Pressure - Flow rate characteristics  
MG-03※-03-40  
Primary pressure: 16 MPa {160 kgf/cm<sup>2</sup>}



MG-03※-1-40  
Primary pressure: 25 MPa {250 kgf/cm<sup>2</sup>}



MG-03※-3-40  
Primary pressure: 25 MPa {250 kgf/cm<sup>2</sup>}



## Contact Details

Before using the product, please check the guide pages at the front of this catalog.

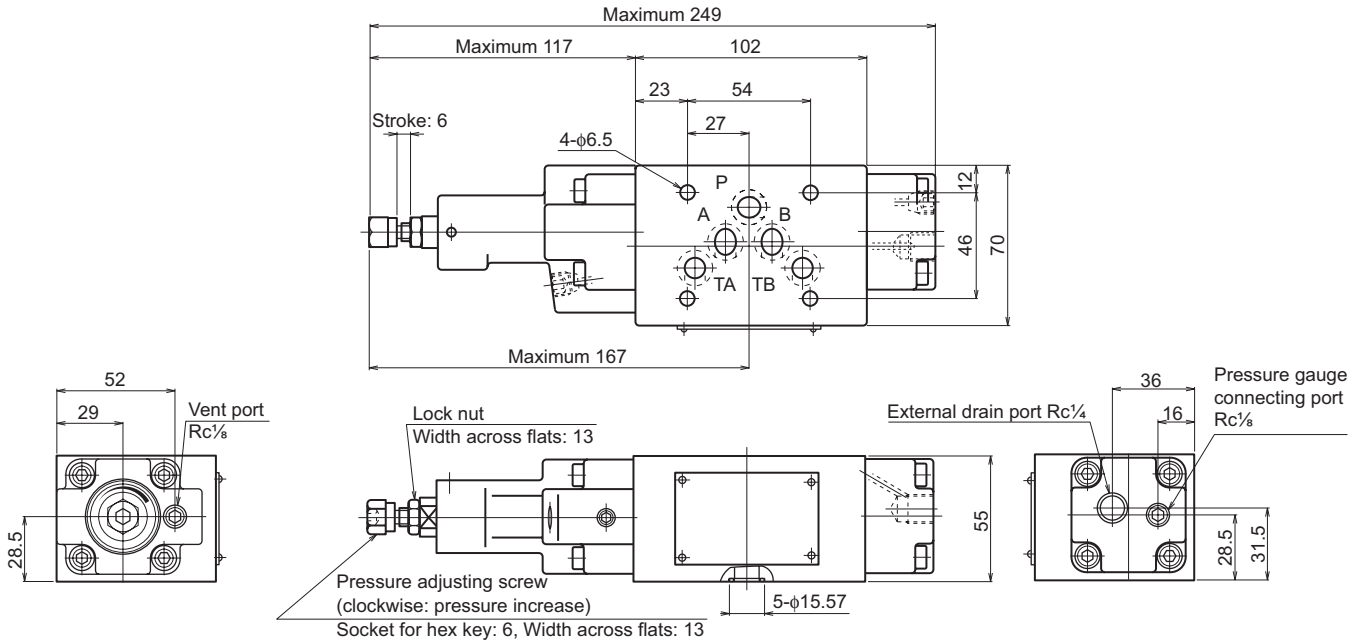
Internet

<https://www.daikinpmc.com/en/>

For latest information, PDF catalogs and operation manuals

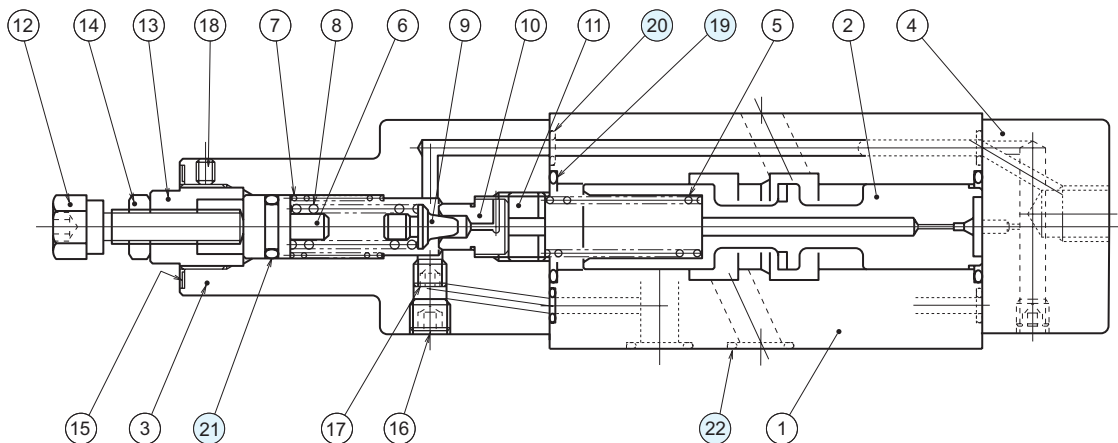
## External dimension diagram

MG-03※



## Sectional structural diagram

MG-03※



Sealing part table

Part No.	Name	Quantity	Part specifications
19	O-ring	2	JIS B 2401 1BP22
20	O-ring	5	JIS B 2401 1BP5
21	O-ring	1	JIS B 2401 1AP11
22	O-ring	5	AS568-014 (NBR, Hs90)