

Contact Details

Before using the product, please check the guide pages at the front of this catalog.

Internet

<https://www.daikinpmc.com/en/>

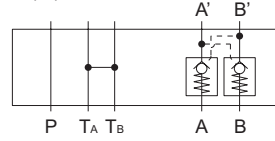
For latest information, PDF catalogs and operation manuals

03 Series Stacking Type Pilot Operated Check Valves

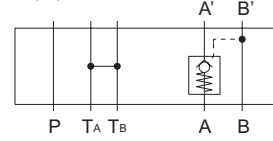
JIS graphic symbols for hydraulic system



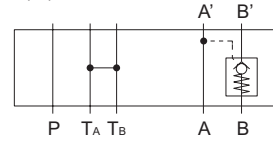
MP(D)-03W



MP(D)-03A



MP(D)-03B



Nomenclature

1 2 3 4 5 6

1 Applicable fluid code

No designation: Petroleum-based hydraulic fluid, water-glycol hydraulic fluid
 F: Phosphate ester hydraulic fluid

2 Model No.

MP: Modular stacking type pilot operated check valve (Applicable only to design No. 40)
 MPD: Modular stacking type pilot operated check valve (Applicable only to design No. 50)

3 Nominal diameter

03: $\frac{3}{8}$

4 Control port

W: Port A/B
 A: Port A
 B: Port B

5 Cracking pressure code

20: 0.2 MPa {2 kgf/cm²}
 50: 0.5 MPa {5 kgf/cm²}

6 Design No. (The design No. is subject to change)

40: 25 MPa {250 kgf/cm²} series
 50: 35 MPa {350 kgf/cm²} series

Specifications

| Model code | Maximum operating pressure MPa {kgf/cm ² } | Maximum flow rate L/min | Cracking pressure MPa {kgf/cm ² } | Area ratio *1 | Mass kg |
|---------------|---|-------------------------|--|---------------|---------|
| MP-03*-20-40 | 25 {250} | 80 | 0.2 {2} | (1) 2 :1 | 3.5 |
| MP-03*-50-40 | | | 0.5 {5} | (2) 13.7:1 | |
| MPD-03*-20-50 | 35 {350} | | 0.2 {2} | (1) 2 :1 | |
| MPD-03*-50-50 | | | 0.5 {5} | (2) 10.8:1 | |

Note: *1 Area ratio (1) Pilot piston: Large check valve (2) Pilot piston: Small check valve

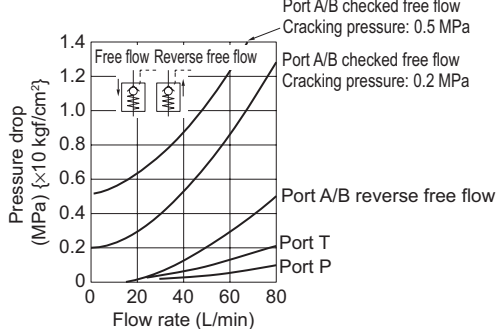
Handling

- These pilot operated check valves are of the decompression type.
- The internal drain type is adopted.

Performance curves (viscosity: 32 mm²/s {cSt})

Pressure drop characteristics

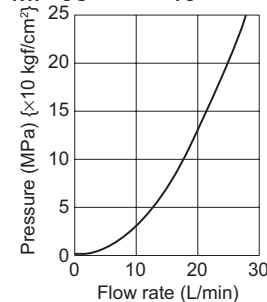
MP-03*-**-40



Pressure drop characteristics

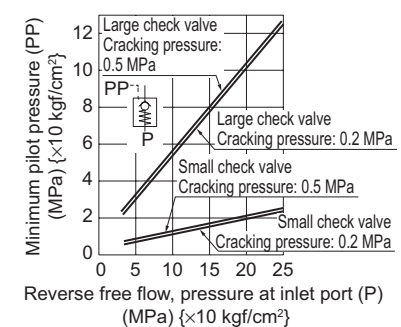
(with the small check valve fully open)

MP-03*-**-40



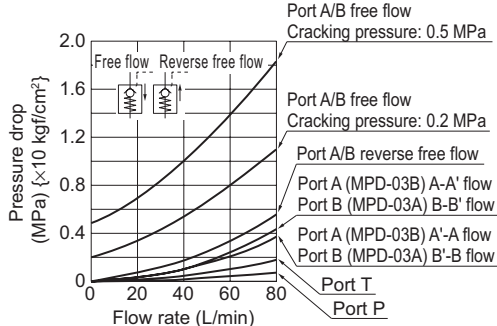
Pilot pressure characteristics

MP-03*-**-40



Pressure drop characteristics

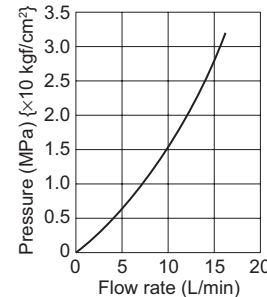
MPD-03*-**-50



Pressure drop characteristics

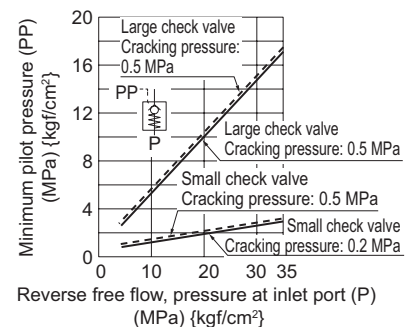
(with the small check valve fully open)

MPD-03*-**-50



Pilot pressure characteristics

MPD-03*-**-50



Contact Details

Before using the product, please check the guide pages at the front of this catalog.

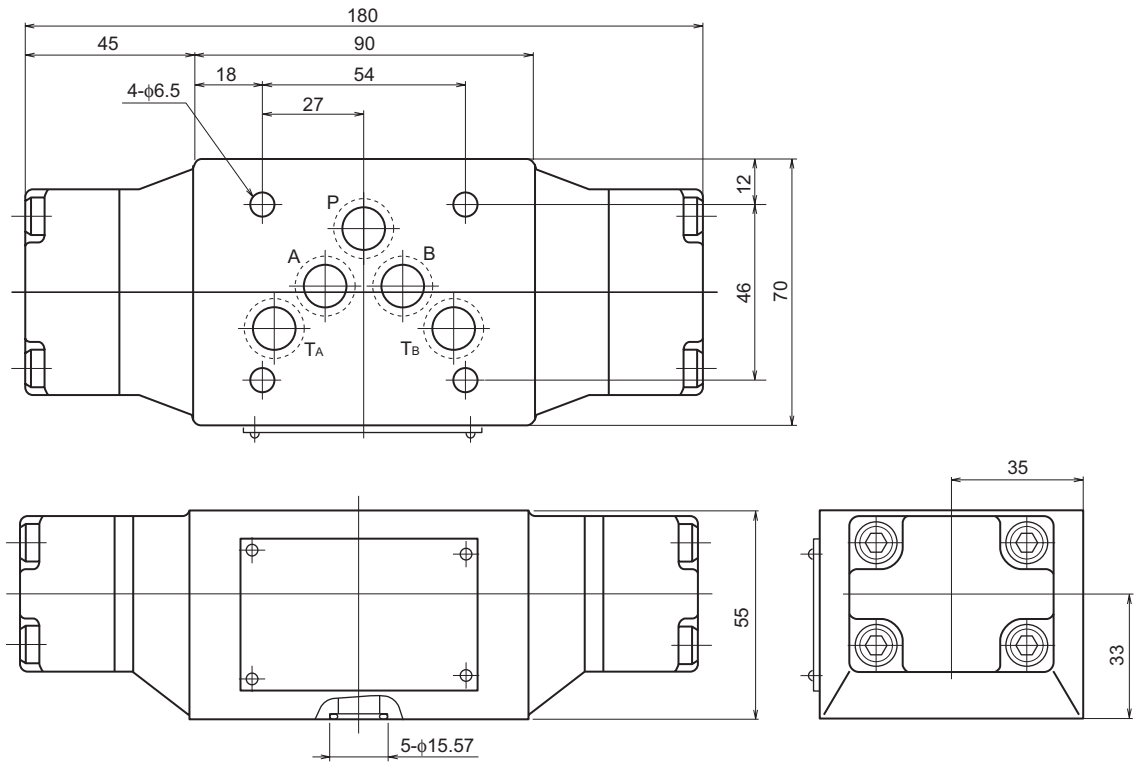
Internet

<https://www.daikinpmc.com/en/>

For latest information, PDF catalogs and operation manuals

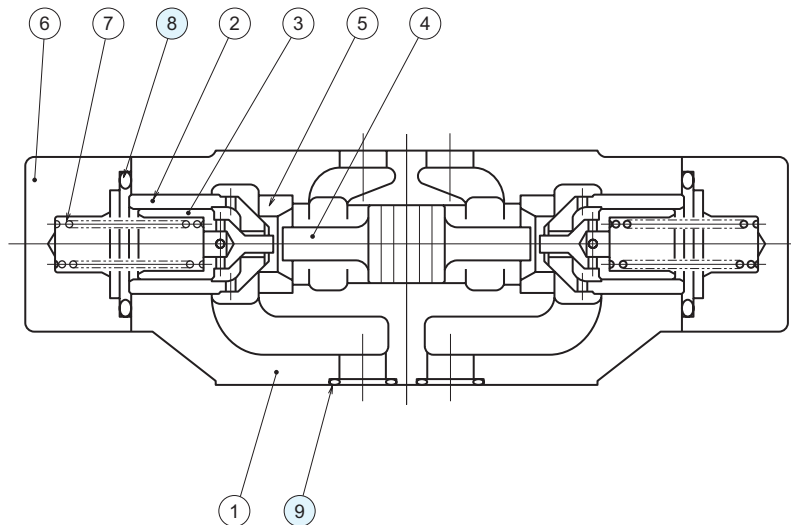
External dimension diagram

MP-03※



Sectional structural diagram

MP-03W



Sealing part table

| Part No. | Name | Quantity | Part specifications |
|----------|--------|----------|-----------------------|
| 8 | O-ring | 2 | JIS B 2401 1B P28 |
| 9 | O-ring | 5 | AS568-014 (NBR, Hs90) |

Contact Details

Before using the product, please check the guide pages at the front of this catalog.

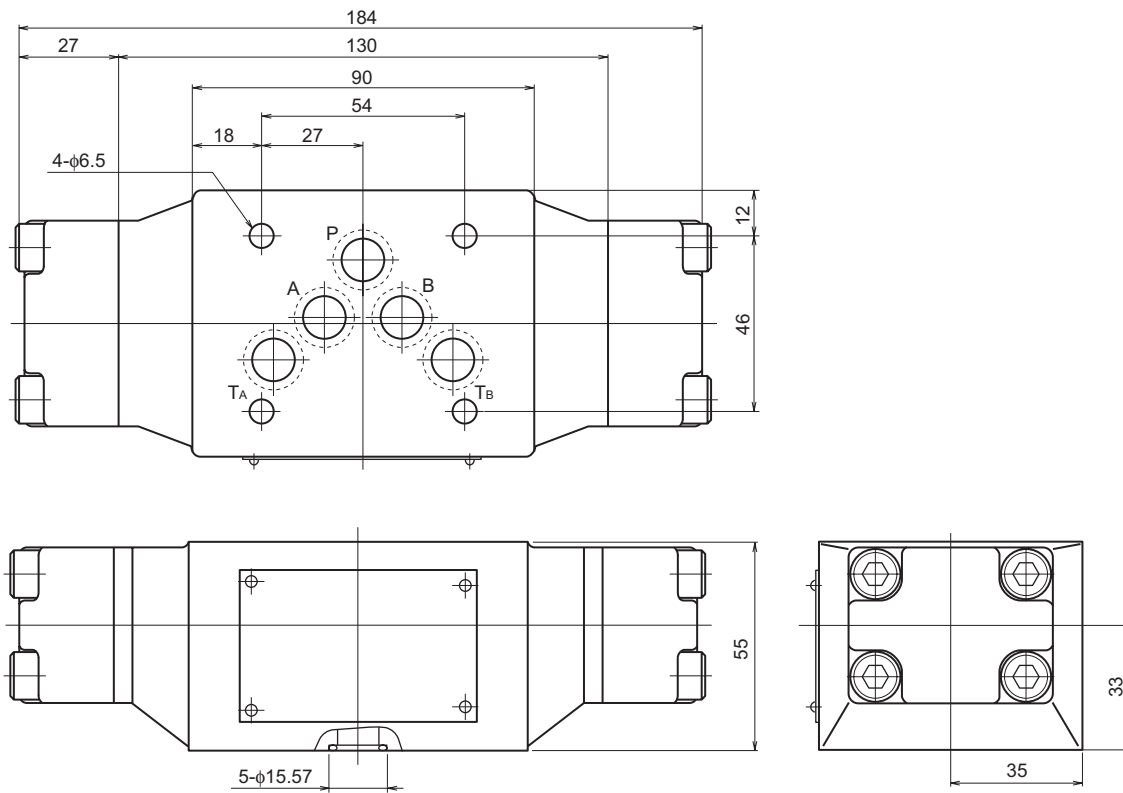
Internet

<https://www.daikinpmc.com/en/>

For latest information, PDF catalogs and operation manuals

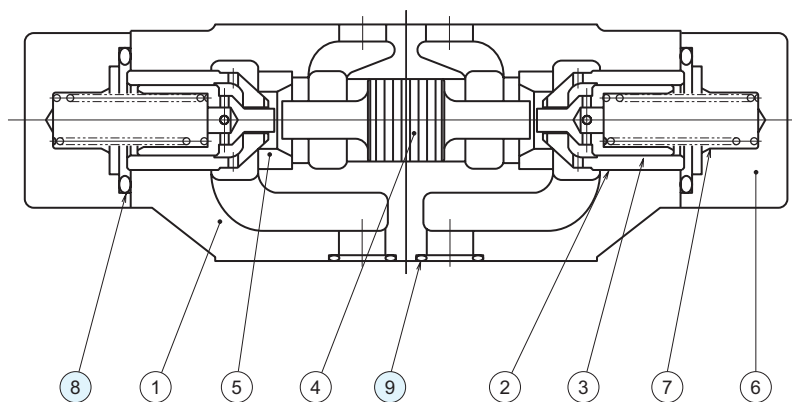
External dimension diagram

MPD-03※



Sectional structural diagram

MPD-03※



Sealing part table

| Part No. | Name | Quantity | Part specifications |
|----------|--------|----------|-----------------------|
| 8 | O-ring | 2 | JIS B 2401 1B P28 |
| 9 | O-ring | 5 | AS568-014 (NBR, Hs90) |