

Contact Details

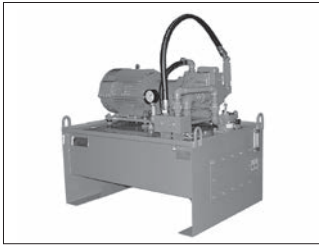
Before using the product, please check the guide pages at the front of this catalog.

Internet

<https://www.daikinpmc.com/en/>

For latest information, PDF catalogs and operation manuals

<OH PACK> Hydraulic Unit



Features

- High energy efficient hydraulic system with an easy control feature for pressure and flow rate achieved by the V series piston pump in the unit.
- Applicable up to a pressure of 21 MPa.
- The base block is ready for construction of a control circuit and allows quick determination of the system configuration and the piping outlet position and also minimizes the unit size.
- Please consult us about other options.

Nomenclature

OP ※※※ ※ ※※ ※※ kW

1 2 3 4 5

1 Model No.

OP: <OH PACK> hydraulic unit

2 Tank capacity

060: 60 L 250: 250 L
100: 100 L 400: 400 L
160: 160 L 630: 630 L

3 Pump/motor connection method

M: Motor pump (without couplings)
V: Coupling

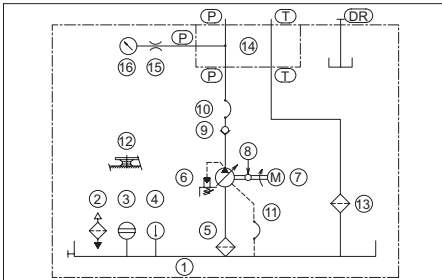
4 Pump capacity

15: V15 38: V38
23: V23 70: V70

5 Motor capacity

1.5: 1.5 kW, 4-pole 15: 15 kW, 4-pole
2.2: 2.2 kW, 4-pole 18.5: 18.5 kW, 4-pole
3.7: 3.7 kW, 4-pole 22: 22 kW, 4-pole
5.5: 5.5 kW, 4-pole 30: 30 kW, 4-pole
7.5: 7.5 kW, 4-pole 37: 37 kW, 4-pole
11: 11 kW, 4-pole

Basic circuit diagram



Part No.	Device name
1	Oil tank
2	Oil filler port with air breather
3	Oil level gauge
4	Thermo label
5	Suction strainer
6	Piston pump
7	Motor
8	Coupling

Part No.	Device name
9	Inline check valve
10	High-pressure hose
11	Low-pressure hose
12	Vibration-absorbing rubber
13	Return filter
14	Outlet block
15	Gauge damper
16	Pressure gauge

Nomenclature

Tank capacity	Connection method	Pump capacity	Motor capacity (Unit: kW, Number of poles: 4)													
			1.5	2.2	3.7	5.5	7.5	11	15	18.5	22	30	37			
60 L	M	15	✓	✓	✓											
	V	15	✓	✓	✓											
100 L	M	15	✓	✓	✓											
	M	23		✓	✓											
	M	38		✓	✓	✓		✓								
	V	15		✓	✓	✓		✓								
	V	23		✓	✓	✓		✓								
	V	38		✓	✓	✓		✓								
160 L	M	15	✓	✓	✓											
	M	23		✓	✓	✓										
	M	38		✓	✓	✓		✓								
	V	15		✓	✓	✓		✓								
	V	23		✓	✓	✓		✓								
	V	38		✓	✓	✓		✓								
250 L	M	15	✓	✓	✓											
	M	23		✓	✓	✓										
	M	38		✓	✓	✓		✓								
	V	15		✓	✓	✓		✓								
	V	23		✓	✓	✓		✓		✓	✓					
	V	38		✓	✓	✓		✓		✓	✓					
400 L	V	70		✓	✓		✓		✓	✓						
	M	38				✓	✓									
	V	38				✓	✓		✓	✓						
	V	70				✓	✓		✓	✓	✓	✓				
630 L	M	38				✓	✓									
	V	38				✓	✓		✓	✓						
	V	70				✓	✓		✓	✓	✓	✓	✓	✓	✓	✓

These products are distributed by DAIKIN Hydraulic Engineering Co., Ltd. Please consult the Sales Counter (see Page U-2) for detailed information.