

Contact Details

Before using the product, please check the guide pages at the front of this catalog.

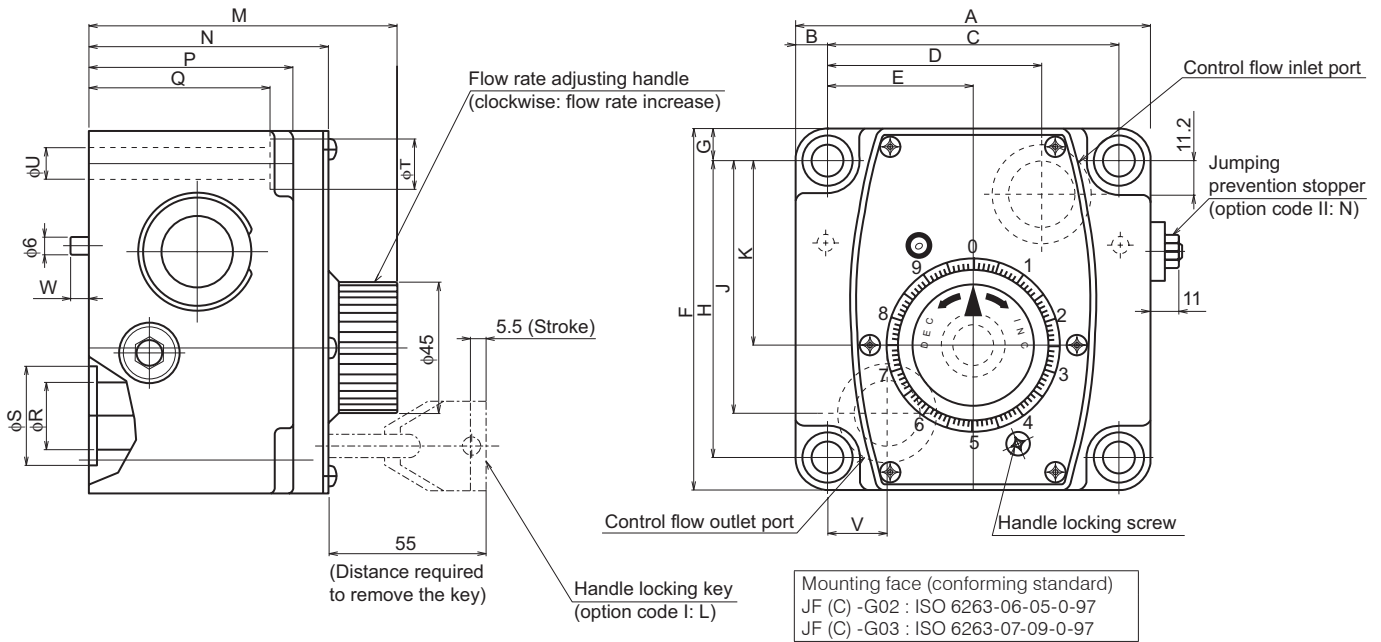
Internet

<https://www.daikinpmc.com/en/>

For latest information, PDF catalogs and operation manuals

External dimension diagram

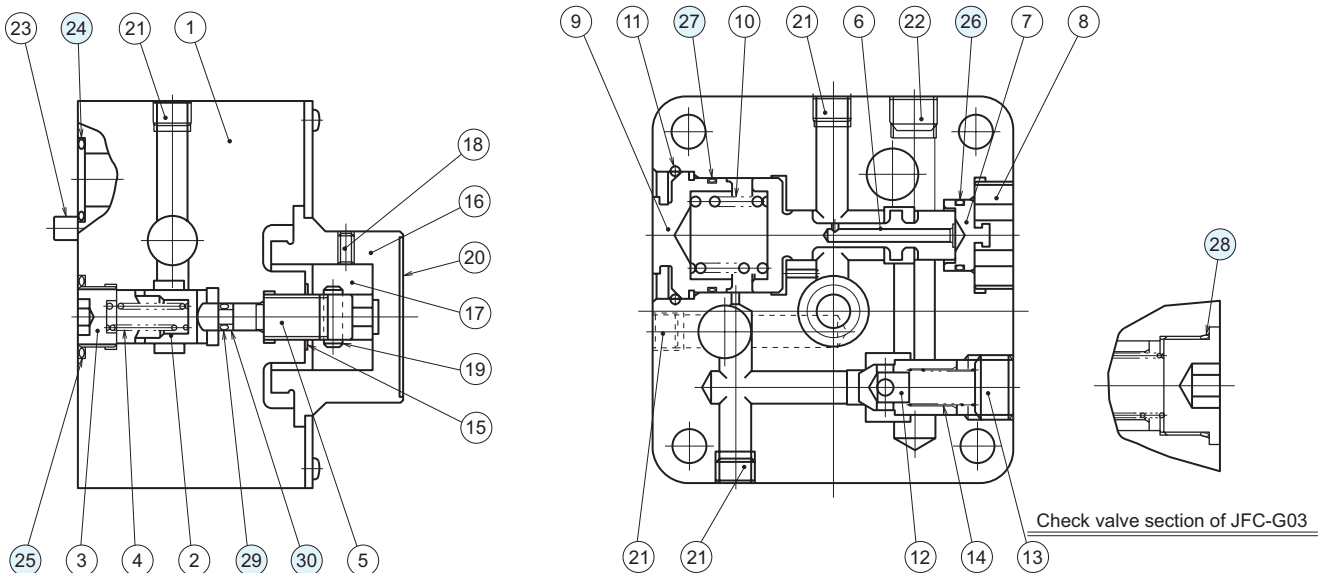
JF(C)-G**



Model No.	Dimensions																			
	A	B	C	D	E	F	G	H	J	K	M	N	P	Q	R	S	T	U	V	W
JF (C) -G02	95.3	9.5	76.2	53.8	38.1	101.6	9.5	82.6	52.4	47.1	86	62	50	42	14	22	14	9	9.5	6.5
JF (C) -G03	124	11.2	101.6	74.9	50.8	124	11.2	101.6	86.6	62.8	108	84	71.5	63.5	23	34	17.5	11	20.6	6

Sectional structural diagram

JF(C)-G**



Sealing part table

Part No.	Name	Quantity	Part specifications		
			JF (C)-G02	JF-G03	JFC-G03
24	O-ring	2	JIS B 2401 1B P18	JIS B 2401 1B P28	JIS B 2401 1B P28
25	O-ring	1	JIS B 2401 1B P18	JIS B 2401 1B G25	JIS B 2401 1B G25
26	O-ring	1	AS568-016 (NBR,Hs90)	JIS B 2401 1B P15	JIS B 2401 1B P15
27	O-ring	1	AS568-023 (NBR,Hs90)	AS568-028 (NBR,Hs90)	AS568-028 (NBR,Hs90)
28	O-ring	1	-	-	AS568-021 (NBR,Hs90)
29	O-ring	1	JIS B 2401 1A P4	JIS B 2401 1A P4	JIS B 2401 1A P4
30	Backup ring	1	JIS B 2407 for P4 (bias cut)	JIS B 2407 for P4 (bias cut)	JIS B 2407 for P4 (bias cut)