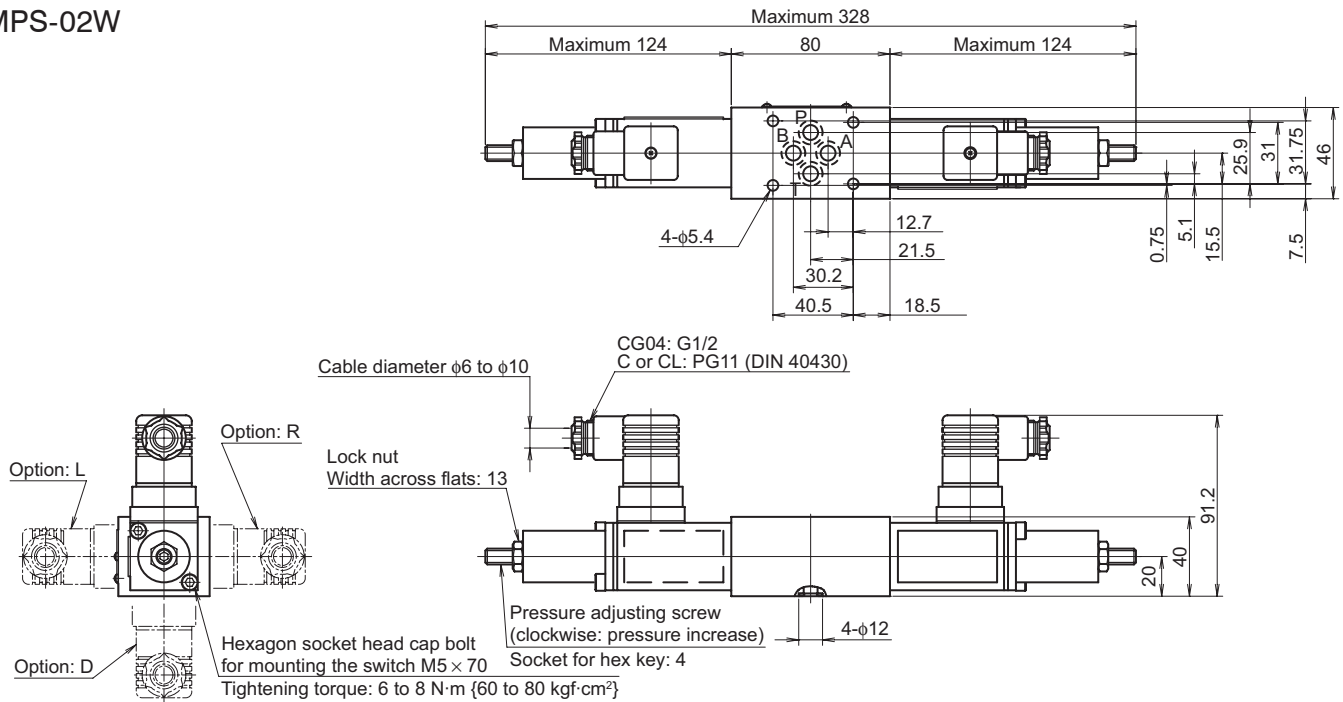


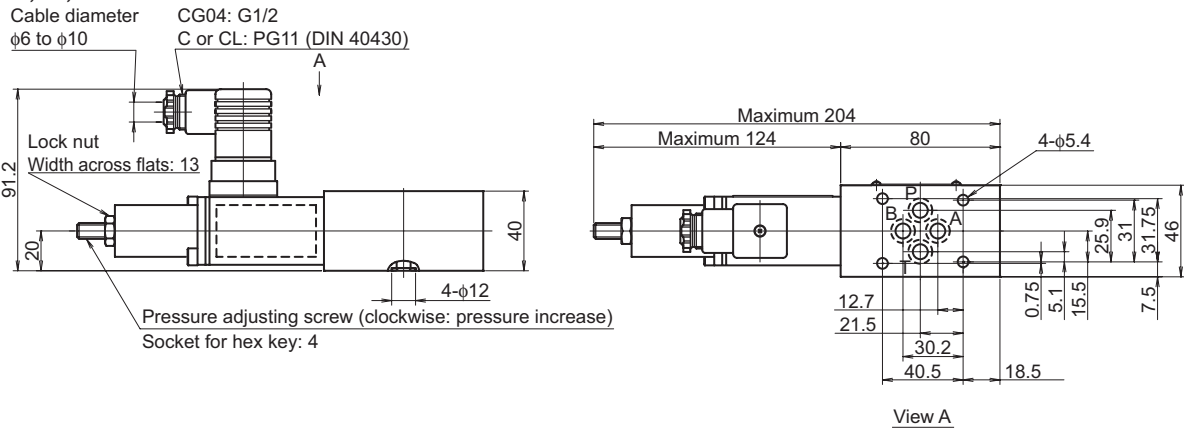
External dimension diagram

MPS-02W



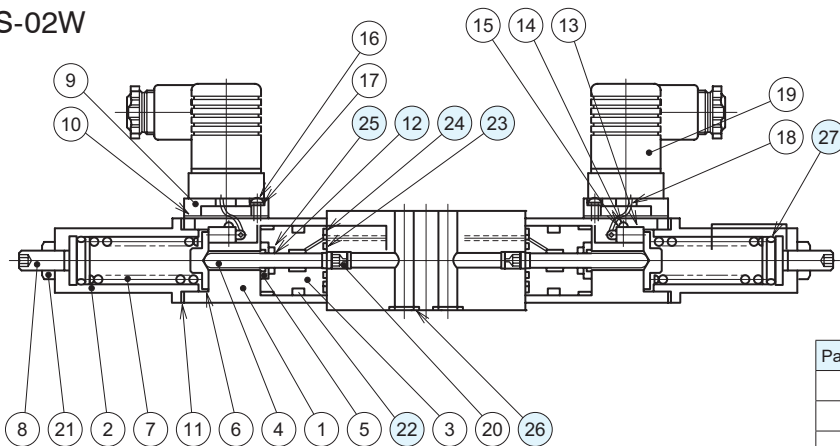
Note: The direction of the models with option codes D, L and R can be changed by removing the switch mounting bolts. After changing the direction, tighten the bolts at the specified torque.

MPS-02P, A, B



Sectional structural diagram

MPS-02W



Sealing part table

Part No.	Name	Adjustment range	Quantity	Part No.
12	Sealing ring	1st pattern	2 (1)	HP12776
		2nd pattern	2 (1)	HP12777
		3rd pattern	2 (1)	HP12778

Part No.	Name	Quantity	Part specifications
22	O-ring	2 (1)	JIS B 2401 1A P22A
23	O-ring	2 (1)	AS568-013 (NBR, Hs90)
24	O-ring	2 (1)	JIS B 2401 1B P21
25	O-ring	2 (1)	1st pattern: JIS B 2401 1A P8
			2nd pattern: JIS B 2401 1A P7
			3rd pattern: JIS B 2401 1A P6
26	O-ring	4	JIS B 2401 1B P9
27	O-ring	2 (1)	JIS B 2401 1A P15

Note: The quantities given in parentheses are for MPS-02P, A, and B.