

Contact Details

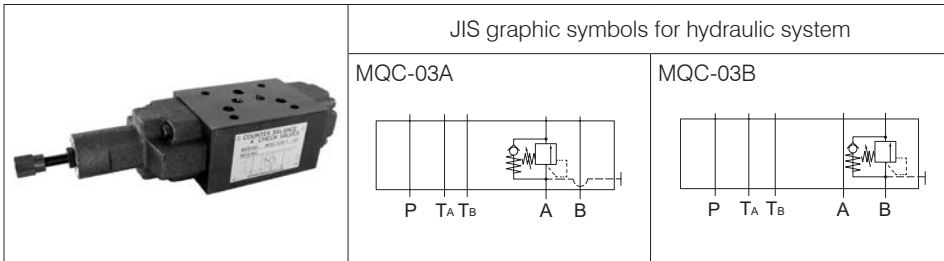
Before using the product, please check the guide pages at the front of this catalog.

Internet

<https://www.daikinpmc.com/en/>

For latest information, PDF catalogs and operation manuals

03 Series Stacking Type Port A/B Counter Balance Valves



Nomenclature

※ - MQC - 03 ※ - 1 ※ - 40

1 Applicable fluid code

No designation: Petroleum-based hydraulic fluid,
water-glycol hydraulic fluid
F: Phosphate ester hydraulic fluid

2 Model No.

MQC: Modular stacking type counter balance valve

3 Nominal diameter

03: $\frac{3}{8}$

4 Control port

A: Port A
B: Port B

5 Function code

1: Counter balance valve

6 Pressure adjustment range

A: 0.25 to 0.85 MPa { 2.5 to 8.5 kgf/cm² }
C: 0.5 to 3.5 MPa { 5 to 35 kgf/cm² }
E: 2 to 14 MPa { 20 to 140 kgf/cm² }

7 Design No.

(The design No. is subject to change)

Specifications

Model code	Maximum operating pressure MPa {kgf/cm ² }	Maximum flow rate L/min	Pressure adjustment range *1 MPa {kgf/cm ² }	Check valve cracking pressure MPa {kgf/cm ² }	Mass kg	Pressure change MPa {kgf/cm ² } per screw revolution
MQC-03※-1A-40	25 {250}	80	0.25 to 0.85 { 2.5 to 8.5 }	0.05 {0.5 }	3.9	0.08 { 0.8 }/revolution
MQC-03※-1C-40			0.5 to 3.5 { 5 to 35 }	0.075 {0.75}		0.33 { 3.3 }/revolution
MQC-03※-1E-40			2 to 14 {20 to 140 }			1.7 {17 }/revolution

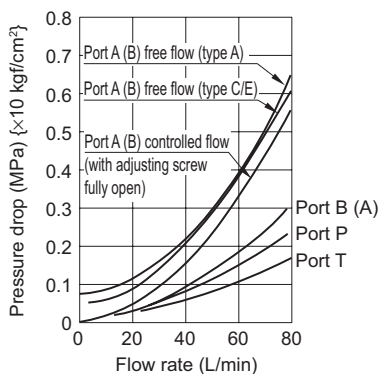
Note: *1 The pressure adjustment ranges are indicated using cracking pressures.

Handling

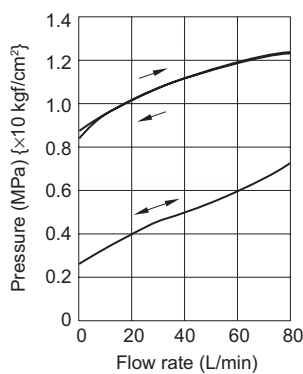
- Since this valve is set as internal drain type, connect the secondary port of the valve directly to the tank.

Performance curves (viscosity: 32 mm²/s {cSt})

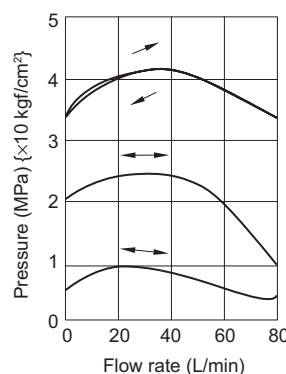
Pressure drop characteristics
MQC-03※-1※



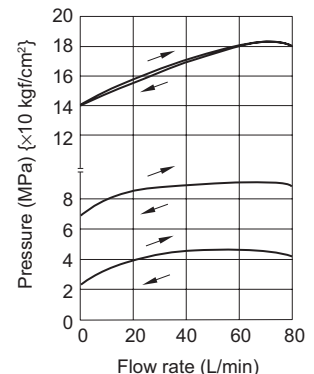
Pressure - Flow rate characteristics
MQC-03※-1A



MQC-03※-1C



MQC-03※-1E



Contact Details

Before using the product, please check the guide pages at the front of this catalog.

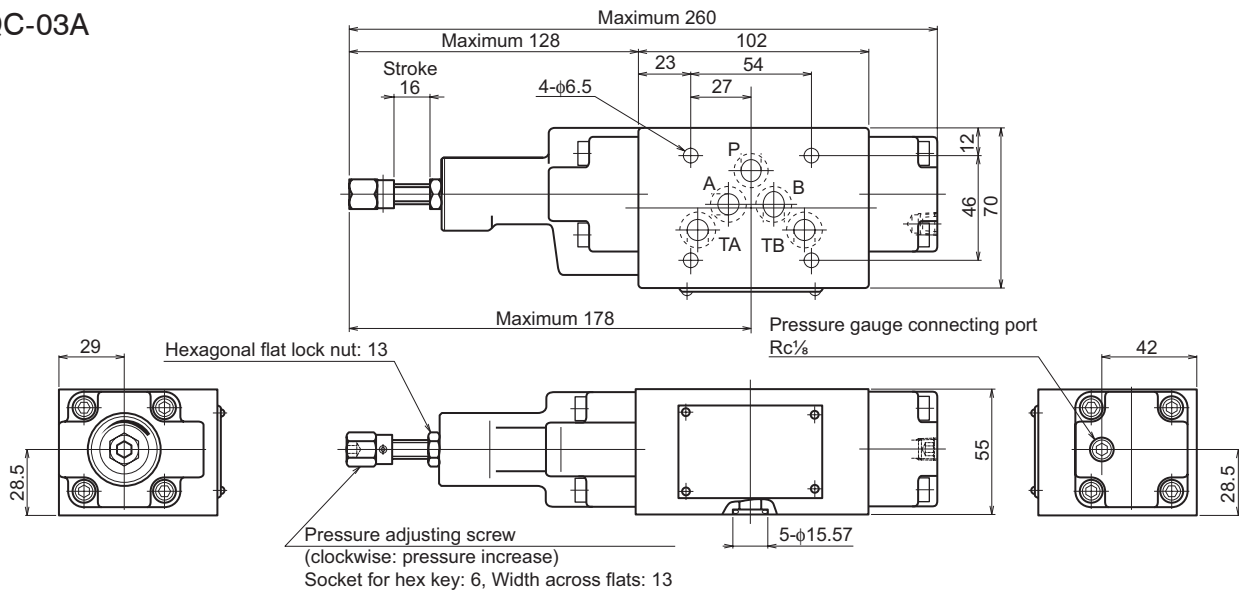
Internet

<https://www.daikinpmc.com/en/>

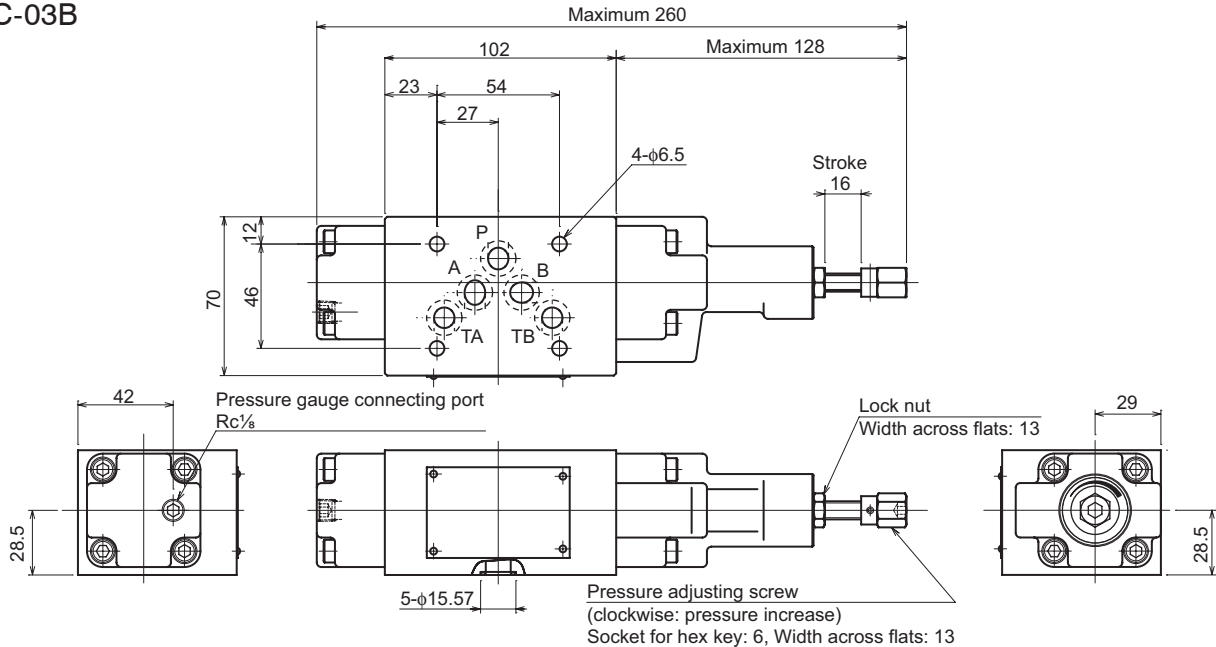
For latest information, PDF catalogs and operation manuals

External dimension diagram

MQC-03A

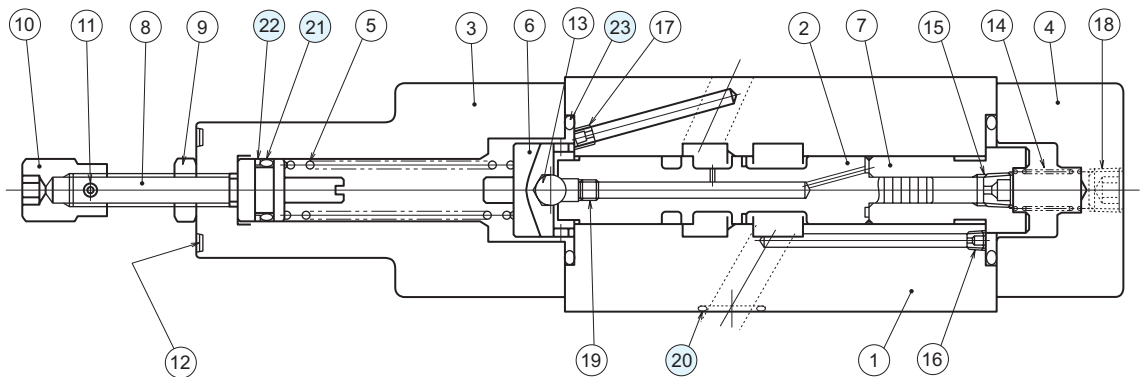


MQC-03B



Sectional structural diagram

MQC-03A



Sealing part table

Part No.	Name	Quantity	Part specifications
20	O-ring	5	AS568-014 Hs90
21	O-ring	1	JIS B 2401 1BP11
22	Backup ring	1	JIS B 2407 Bias cut P11
23	O-ring	2	JIS B 2401 1BG30