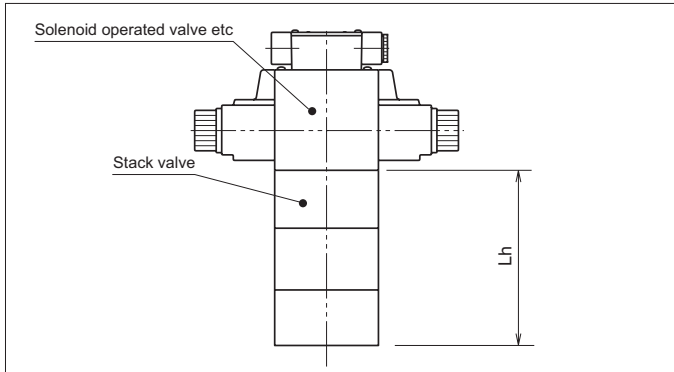


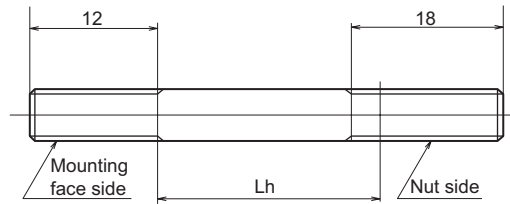
03 Series Stack Valve Mounting Bolts

Bolt selection guide

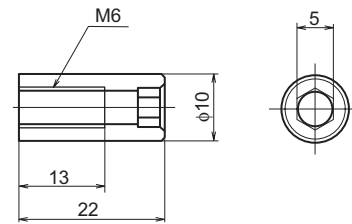
Select the bolts to be used for mounting stack valves and stacking blocks according to the stacked height (Lh) of the valves and blocks.



Stud bolt



Nut for stud bolts (provided with stud bolts)



Tightening torque of mounting bolts

13 to 15 N·m {130 to 150 kgf·cm}

Hexagon socket head cap bolt

Number of stack levels	Stacked dimension Lh (mm)	Mounting bolt model code	Hexagon socket head cap bolt
0	0	HB300	M6 × 40
1	55	HB301	M6 × 95
2	110	HB302	M6 × 150
3	165	HB303	M6 × 205
4	220	HB304	M6 × 260

Stud bolt

Number of stack levels	Stacked dimension Lh (mm)	Mounting bolt model code	Stud bolt
0	0	SB300	M6 × 50
1	55	SB301	M6 × 105
2	110	SB302	M6 × 160
3	165	SB303	M6 × 215
4	220	SB304	M6 × 270

Note: ○ The model codes cited above are for sets of four bolts.

○ A number of stack levels of "0" means that only a solenoid valve is used, with no stack valves stacked.

○ When using stud bolts, screw them at least 9 mm into the mounting face of the manifold block or other mount.

○ For working pressures higher than 25 MPa, the number of stack levels should be limited to no more than 3.

Adjusting handle type External dimension diagram

<p>MR-03P-※※-40-T</p>	<p>MG-03P(B)-※※-40-T</p>
<p>MT-03P-40-T</p>	<p>MT-03W※-40-T</p>