

Contact Details

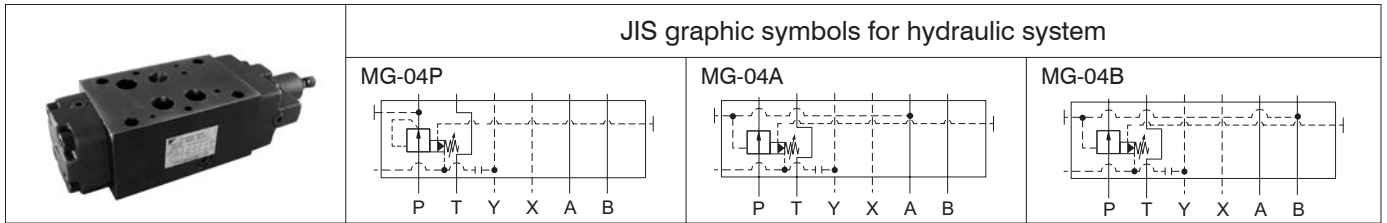
Before using the product, please check the guide pages at the front of this catalog.

Internet

<https://www.daikinpmc.com/en/>

For latest information, PDF catalogs and operation manuals

04 Series Stacking Type Reducing Valves



Nomenclature



1 Applicable fluid code

No designation: Petroleum-based hydraulic fluid,
water-glycol hydraulic fluid
F: Phosphate ester hydraulic fluid

2 Model No.

MG: Modular stacking type reducing valve

3 Nominal diameter

04: ½

4 Control port

P: Port P
A: Port A
B: Port B

5 Pressure adjustment range

1: 0.8 to 7 MPa { 8 to 70 kgf/cm² }
2: 2 to 16 MPa { 20 to 160 kgf/cm² }
3: 3.5 to 25 MPa { 35 to 250 kgf/cm² }

6 Design No.

(The design No. is subject to change)

7 Piping port

R02: Connection port Rc¼
S02: Connection port G¼ O-ring boss (JIS B 2351)

8 Drainage code

No designation: External drain type (external piping connection type)
B: External drain type (port Y open type)

Specifications

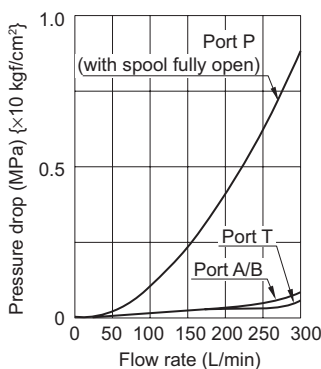
Model code	Maximum operating pressure MPa {kgf/cm ² }	Maximum flow rate L/min	Pressure adjustment range MPa {kgf/cm ² }	Mass kg	Pressure change MPa {kgf/cm ² } per screw revolution
MG-04⊗-1-10	35 {350}	300	0.8 to 7 { 8 to 70 }	8	2.5 {25}/revolution
MG-04⊗-2-10			2 to 16 {20 to 160}		4.6 {46}/revolution
MG-04⊗-3-10			3.5 to 25 {35 to 250}		7.9 {79}/revolution

Handling

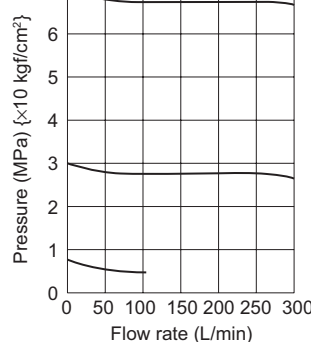
- Directly connect the drain piping to the tank without merging it with other tank piping.
- To ensure good pressure reducing performance, set the primary side main circuit pressure and the secondary pressure reducing circuit pressure such that there is a minimum difference of 1 MPa {10 kgf/cm²}.
- When using the valve in combination with a direct operated relief valve for remote control, connect it to the vent port of the valve. Since excessive internal volume of the vent piping may lead to vibration, use steel pipes with an inner diameter of 4 mm maximum and thick walls for piping.
- The drain type setting can be changed by fitting/removing plugs. See the sectional structural diagram on Page I-100 for details.
- The control port setting can be changed by rearranging the bottom lid. See the sectional structural diagram on Page I-100 for details.

Performance curves (viscosity: 32 mm²/s {cSt})

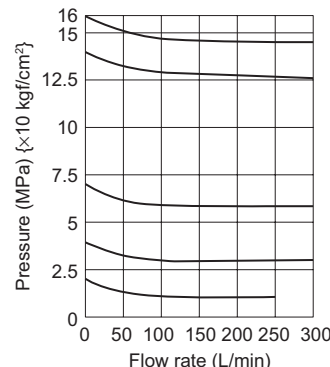
Pressure drop characteristics
MG-04⊗-⊗



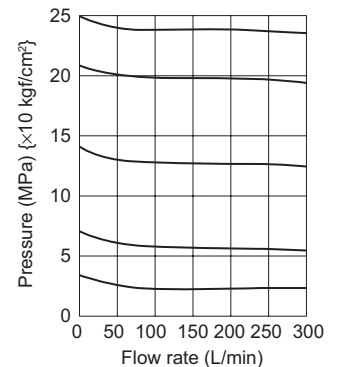
Pressure - Flow rate characteristics
MG-04⊗-1
Primary pressure:
35 MPa {350 kgf/cm²}



MG-04⊗-2
Primary pressure:
35 MPa {350 kgf/cm²}

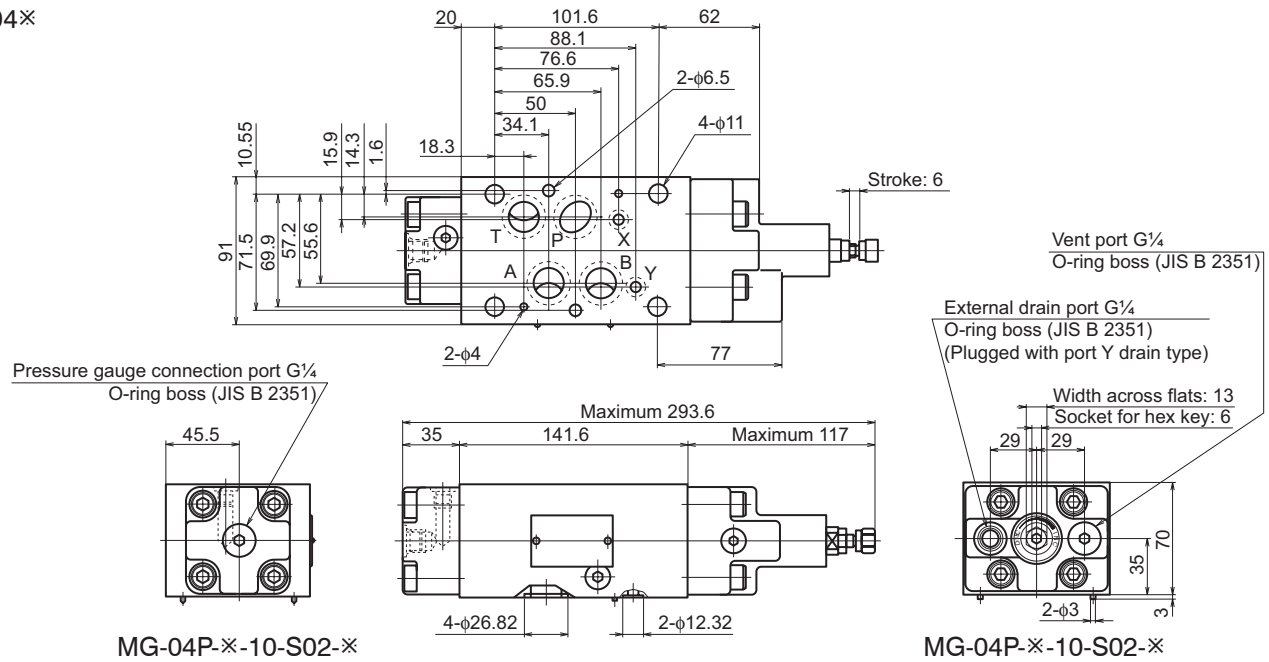


MG-04⊗-3
Primary pressure:
35 MPa {350 kgf/cm²}



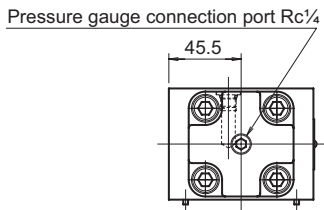
External dimension diagram

MG-04※

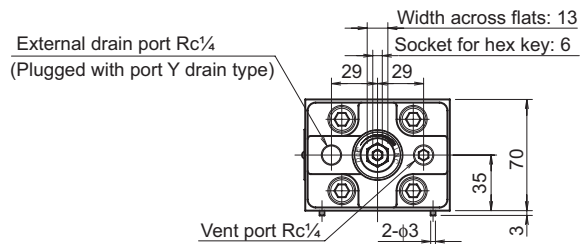


MG-04P-※-10-S02-※

MG-04P-※-10-S02-※



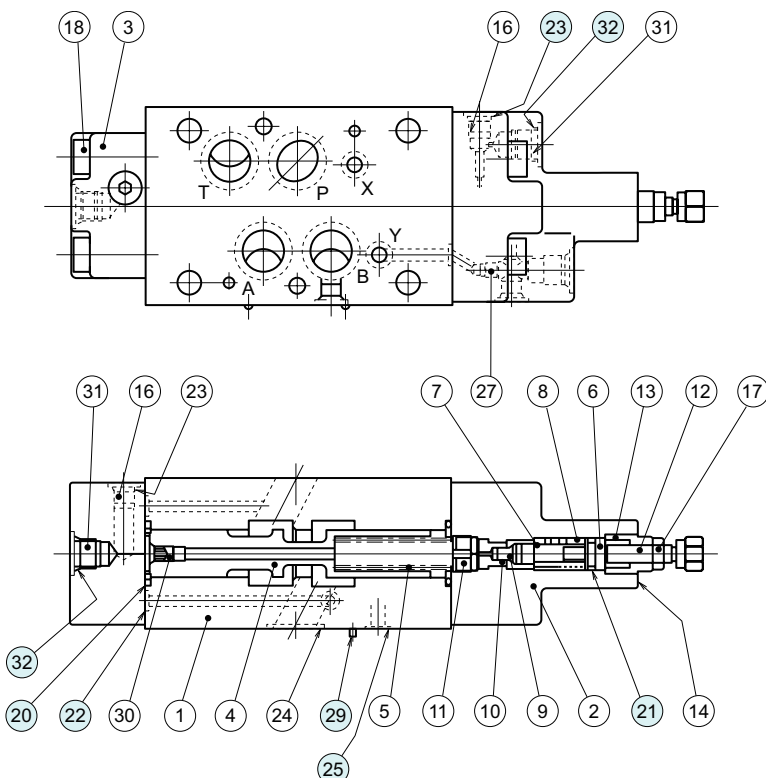
MG-04P-※-10-R02-※



MG-04P-※-10-R02-※

Sectional structural diagram

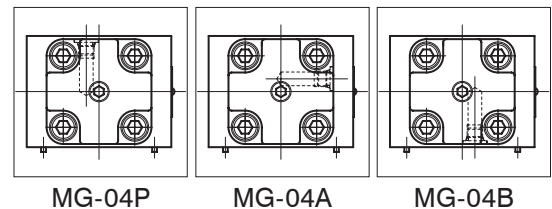
MG-04※



Drain type setting guide

To change the external drain type to the port Y drain type, remove the hexagon socket plug (part No. 27) and fit a plug (R¼ plug for R02 or G¼ hexagon socket thread plug with flange and O-ring 1BP11 for S02) to the external drain port.

Changing the control port



Sealing part table

Part No.	Name	Quantity	Part specifications
20	O-ring	2	JIS B 2401 1B G25
21	O-ring	1	JIS B 2401 1A P11
22	O-ring	4	JIS B 2401 1B P7
23	O-ring	4	JIS B 2401 1B P8
24	O-ring	4	AS568-118 (NBR, HS90)
25	O-ring	2	AS568-012 (NBR, HS90)
32	O-ring	2	JIS B 2401 1B P11