

Contact Details

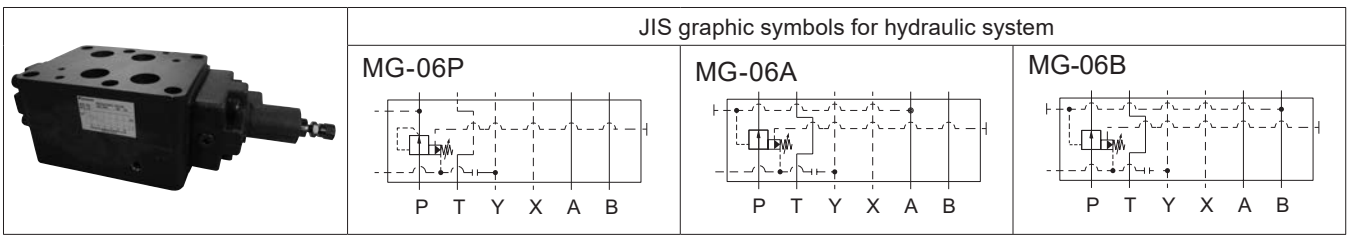
Before using the product, please check the guide pages at the front of this catalog.

Internet

<https://www.daikinpmc.com/en/>

For latest information, PDF catalogs and operation manuals

06 Series Stacking Type Reducing Valve



Nomenclature

1 - **MG** - 2 **06** 3 4 **30** - 5 **02** - 6 **02** - 7 **02** - 8

- | | | |
|---|---|---|
| <p>1 Acceptable fluid code
No designation: Petroleum-based hydraulic fluid, water-glycol hydraulic fluid
F: Phosphate ester hydraulic fluid</p> <p>2 Model No.
MG: Modular stacking type reducing valve</p> <p>3 Nominal diameter
06: $\frac{3}{4}$</p> | <p>4 Control port
P: Port P
A: Port A
B: Port B</p> <p>5 Pressure adjustment range
1: 0.8 to 7 MPa
1S: 2 to 7 MPa
2: 2 to 16 MPa
3: 3.5 to 25 MPa</p> | <p>6 Design No. (The design No. is subject to change.)</p> <p>7 Piping port
R02: Connection port Rc$\frac{1}{4}$
S02: Connection port G$\frac{1}{4}$ O-ring boss (JISB2351)</p> <p>8 Drainage code
No designation: External drain type (external piping connection type)
B: External drain type (port Y open type)</p> |
|---|---|---|

Specifications

Model code	Maximum operating pressure MPa	Maximum flow rate L/min	Pressure adjustment range MPa	Mass kg	Pressure change MPa per screw revolution
MG-06 1 -30	35	150	0.8 to 7	12.1	0.25 / revolution
MG-06 1S -30		500	2 to 7		4.5 / revolution
MG-06 2 -30		600	2 to 16		7.7 / revolution
MG-06 3 -30			3.5 to 25		

Note: Since the maximum flow rate is restricted according to the pressure set at the secondary side, refer to the flow rate - pressure characteristics diagrams and use the valve at a flow rate within the restricted range.

Handling

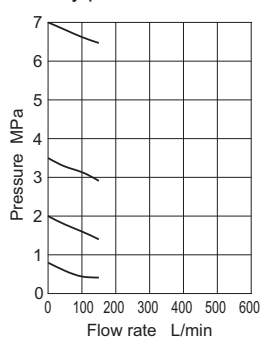
- Directly connect the drain piping to the tank without merging it with other tank piping.
- To ensure good pressure reducing performance, set the primary side main circuit pressure and the secondary pressure reducing circuit pressure such that there is a minimum difference of 1 MPa {10 kgf/cm²}.
- When using the valve in combination with a direct operated relief valve for remote control, connect the remote control valve to the vent port. Since excessive internal volume of the pilot piping may lead to vibration, use steel pipes with an inner diameter of 4 mm maximum and with thick walls for this piping.
- The drain type setting can be changed by fitting/removing plugs. See the dimensional outline drawing on Page I-122 for details.
- The control port setting can be changed by rearranging the bottom lid. See the sectional structural diagram on Page I-123 for details.

Performance curves (viscosity: 32 mm²/s)

Flow rate - pressure characteristics

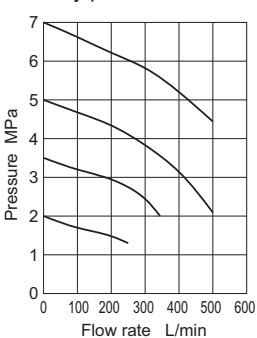
MG-061

Primary pressure: 35 MPa



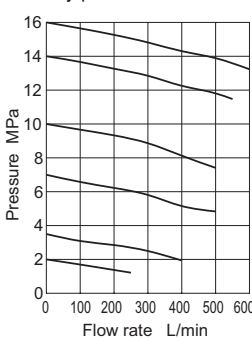
MG-061S

Primary pressure: 35 MPa



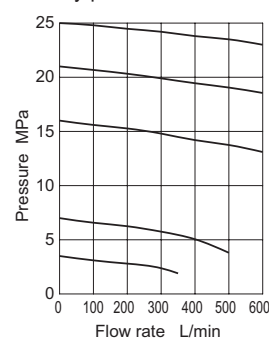
MG-062

Primary pressure: 35 MPa



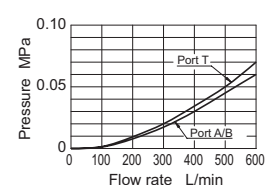
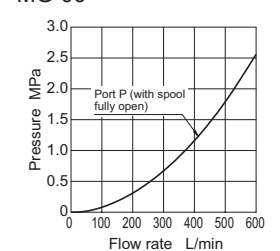
MG-063

Primary pressure: 35 MPa



Pressure drop characteristics

MG-061-1S



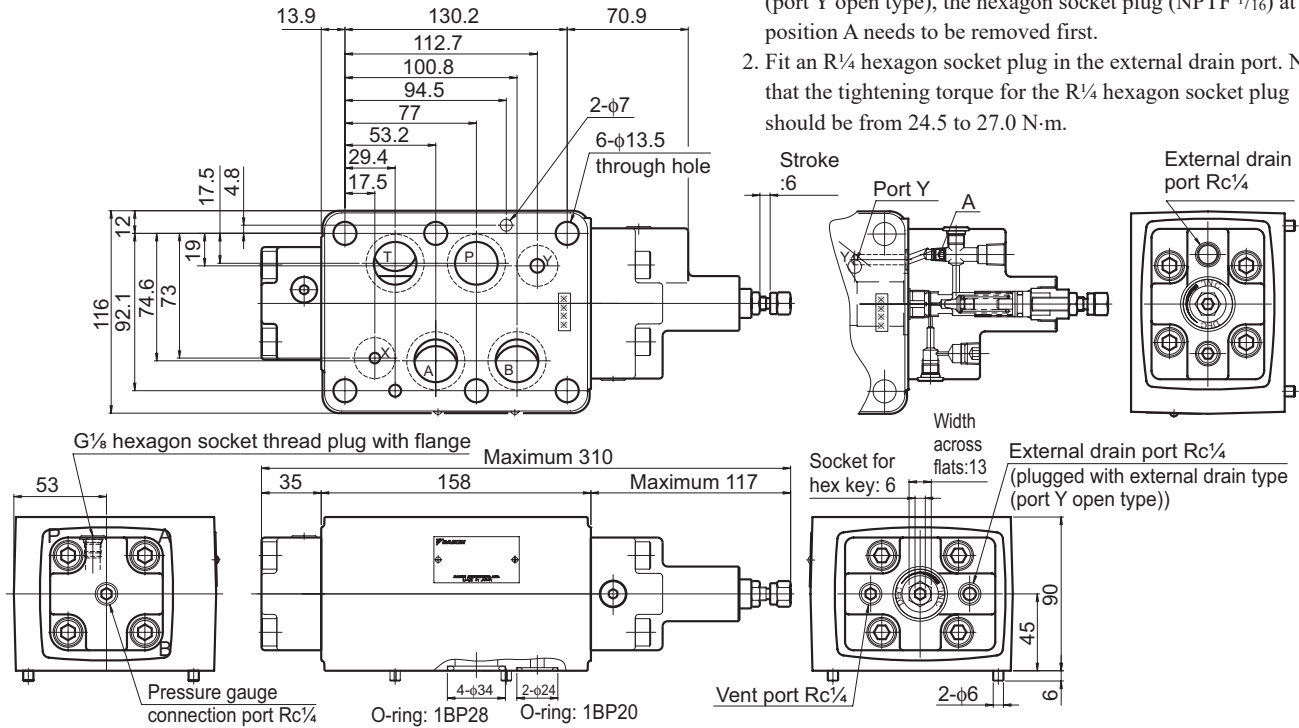
MODULAR STACK VALVES

Dimensional outline drawing

MG-06-**-**-30-R02-*

Drain type setting guide

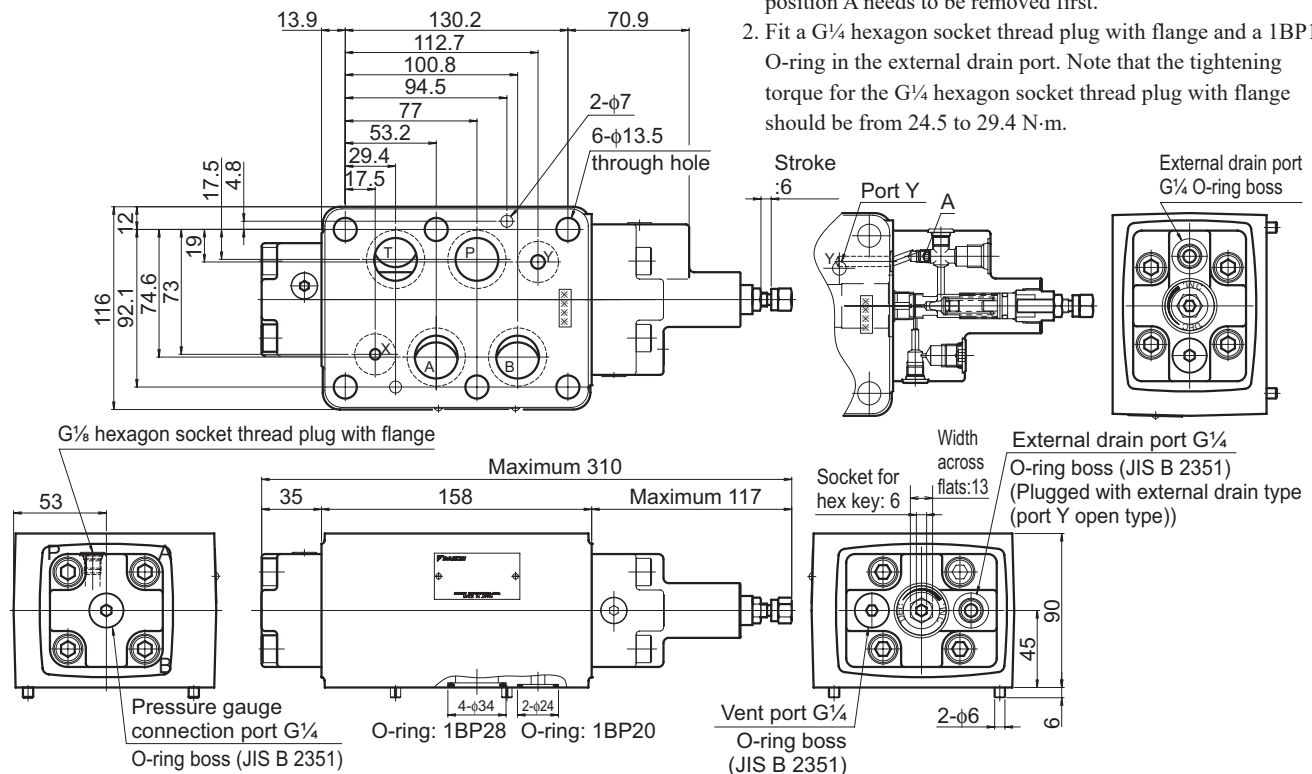
1. Standard valves are set to external drain type (external piping connection type). To change the setting to external drain type (port Y open type), the hexagon socket plug (NPTF 1/16) at position A needs to be removed first.
2. Fit an R1/4 hexagon socket plug in the external drain port. Note that the tightening torque for the R1/4 hexagon socket plug should be from 24.5 to 27.0 N·m.



MG-06P-**-**-30-R02-*

Drain type setting guide

1. Standard valves are set to external drain type (external piping connection type). To change the setting to external drain type (port Y open type), the hexagon socket plug (NPTF 1/16) at position A needs to be removed first.
2. Fit a G1/4 hexagon socket thread plug with flange and a 1BP11 O-ring in the external drain port. Note that the tightening torque for the G1/4 hexagon socket thread plug with flange should be from 24.5 to 29.4 N·m.



MG-06P-**-**-30-S02-*

Contact Details

Before using the product, please check the guide pages at the front of this catalog.

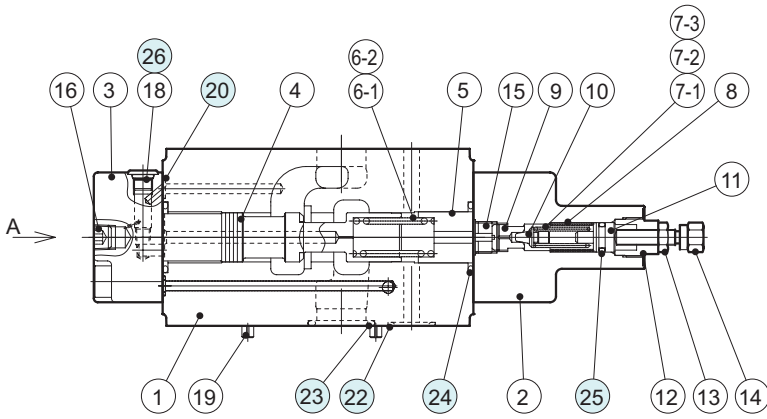
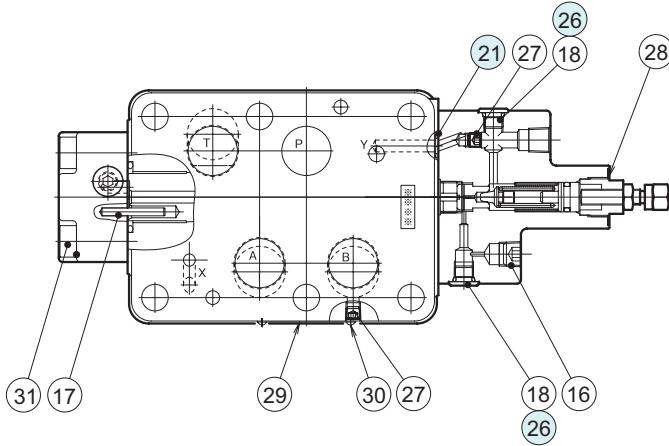
Internet

<https://www.daikinpmc.com/en/>

For latest information, PDF catalogs and operation manuals

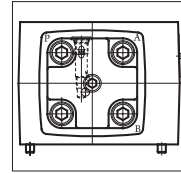
Sectional structural diagram

MG-06

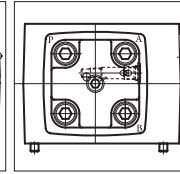


Changing the control port

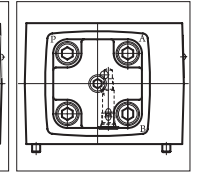
1. Mount the bottom lid as shown to the left while taking care about the position of the G $\frac{1}{8}$ hexagon socket thread plug with flange in the side face of the bottom lid.
2. Note that the tightening torque for the mounting bolts (M10 × 40) of the bottom lid should be from 47.0 to 61.7 N·m.



MG-06P



MG-06A



MG-06B

Sealing part table

Part No.	Name	Quantity	Part specifications
20	O-ring	3	JIS B 2401 1B P7
21	O-ring	1	JIS B 2401 1B P9
22	O-ring	2	JIS B 2401 1B P20
23	O-ring	4	JIS B 2401 1B P28
24	O-ring	2	JIS B 2401 1B P30
25	O-ring	1	JIS B 2401 1A P11
26	O-ring	3	JIS B 2401 1B P8